



COMMUNITY VOTES FOR CONSERVATION

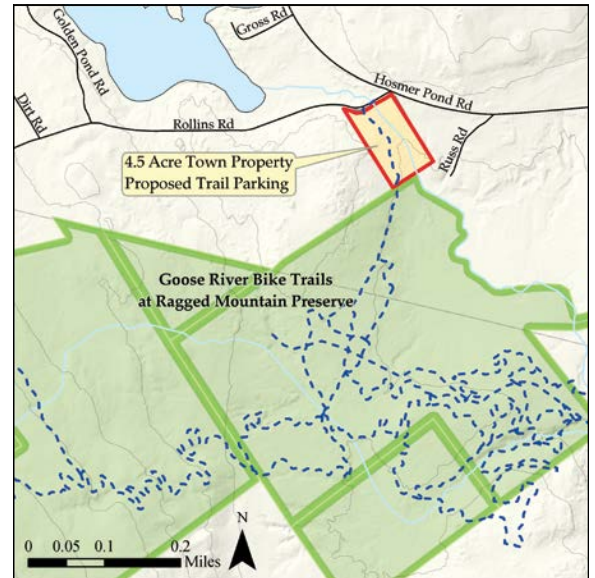
Town of Camden approves transfer of land on Goose River

In June, 93% of Camden residents approved transferring a 4.5-acre town-owned property to the Land Trust which will improve access to a network of trails off Rollins Road that are part of the Ragged Mountain Preserve.

The property to be transferred sits along a lovely stretch of the Goose River that connects to the larger Ragged Mountain Preserve and a very popular network of trails used for mountain biking, trail running, hiking, and cross-country skiing. Many of the Goose River trails are flatter and less technical than other trails in the area and are ideal for new riders and kids.

Over the last decade, the Midcoast Chapter of the New England Mountain Biking Association (McNEMBA) constructed trails in the Goose River portion of the Ragged Mountain Preserve. Much of that land was donated to the Land Trust over the last few years by Rick and Ann Bresnahan in 2021, and Herb Annis in 2018. Since taking ownership, the Land Trust has partnered with McNEMBA and Sidecountry Trails to improve the trails and signage on the Goose River trail network.

Currently, trail users have limited parking available to access the trails. Riding from the Snow



Bowl to the Goose River trail network requires the rider to be fairly skilled, or ride along Hosmer Pond Road. With this transfer, the Land Trust will maintain the property in its natural condition, and build a small parking area, improving access for beginner-level mountain bikers, or those seeking a gentle hike, trail run, or a place to fish in the river.

BRING YOUR FRIENDS TO THE DUCKTRAP

New preserve parking lot improves access



Ducktrap River upstream from Route 52

The Ducktrap River Preserve is a remarkable place, one of the wildest in the Midcoast. It is home to bobcats and bears, deer and moose, brook trout and Atlantic salmon, bald eagles and ospreys, and so many more wonderful creatures. The 1,260-acre preserve, owned and managed by the Land Trust, is in the center of a contiguous corridor of nearly 4,000 acres of permanently conserved land stretching from Ducktrap Beach to Tilden Pond. Today over 85% of the river is conserved.

The Ducktrap River Preserve and trail has long been popular with hikers, skiers, fishers, and birders who access it from Route 52 in Lincolnville. On a nice spring day, it was not uncommon to see half a dozen or more cars parked in various pull-offs on the shoulder of this busy road because the preserve didn't have a parking lot.

In 2022, we decided to fix this problem and make the preserve a more welcoming and accessible place. Land Trust staff designed a 6–8 car parking lot on the south side of Route 52, the site of an old log landing. Todd Young built the gravel lot starting in late 2022, and recently finished it in May of this year. Volunteers helped build and install a new kiosk and install “hiker” signs along the roadway on 52 to alert traffic to the presence of crossing hikers. The flat and dry lot allows for preserve users to park and then fully turn around before exiting, eliminating the need to make a dangerous reverse into Route 52. If you haven't been recently, the summer and fall are great times to visit the Ducktrap — come check it out and bring a friend, *or two!*



New Ducktrap Preserve parking lot



Volunteers Tom Earley and Bob Olfenbuttel install kiosk

INVESTING FOR THE LONG HAUL



Stewardship Team L-R: Jack Shaida, Ryan Gates, Ryan O'Neill

Working on a farm for many years taught me the value of doing things right the first time. Cut corners when building a fence and the cows are loose. Buy a cheap tool and you'll be buying another before you know it.

While nonprofits are well accustomed to making do with less, our organization has also learned how important it is to make investments that last in the lands we've protected. Given our commitment to permanence, we've realized that spending money up front saves resources down the road and protects the reasons that motivated us to conserve the land in the first place.

If you regularly visit our preserves, you will have noticed how much we've invested in recent years in stewardship projects that last. On Ragged Mountain and Beech Hill, for example, we've hired professional contractors to build and install machine-built trails that are more accessible and far easier to care for over time relative to traditional hiking trails. At Hurds Pond and McLellan-Poor, we've installed aluminum bridges that will last longer than the traditional wood bog bridging used previously.

This year, we've also invested significantly in equipment and infrastructure that will be required to continue to care

for the more than 13,000 acres we've conserved. We recently remodeled an existing building at Beech Hill into a hub for stewardship and installed a shed at the Head of Tide Preserve to service stewardship in Waldo County.

Most important of all, we also continue to develop the staff, volunteer base, and partnerships with other community organizations required to care for the land. Today we have a team of three full-time stewardship staff, two summer interns, 150+ volunteers and growing partnerships with organizations such as McNEMBA and Belfast Bay Watershed Coalition to see trails and preserves maintained. Building a community of people committed to caring for the land is the most important investment in the land that we can make. Let us know if you'd like to get involved!

Ryan Gates
Stewardship Program Director

READY FOR ANYTHING

Land Trust supports Rockport Fire Department emergency response equipment

The Rockport Fire Department has worked for the last year to obtain funding through grants, donations, and the department budget to order a new emergency response utility vehicle and trailer. These tools are needed for search and rescue and wildfire calls, and as a command post when responding to emergencies in Knox and Waldo Counties.

The Rockport Fire Chief reached out to see if we, as the Land Trust, could help raise support for the purchase because this type of vehicle is capable of responding to wildland emergencies, including those which might occur on our trail systems. We connected with our trail partners — Sidecounty Sports and Maine Water Company — and we each made donations of \$5,000 in support of the department's purchase of a new trailer in April of 2022 and a Polaris UTV in the early fall of 2022.

In a recent conversation with the Fire Chief, he shared that the spring of 2023 has already brought five calls for the UTV to be deployed within Rockport and Warren. "Three of these calls were active forest fires



Nitro Trailer

that required the UTV and the pump to be used for several hours to help extinguish the fires. Within a year's timeframe this new tool and equipment has already proven its need and abilities to the department and town. This wouldn't have been possible without the teamwork of our volunteers, amazing donors, and Town Manager Jonathan Duke."

The Land Trust benefits year-round from all the hard work and dedication of our community partners and first responders.



2022 Polaris XP 1000 UTV

We are happy to do our part by partnering with the Rockport Fire Department and helping to keep our communities safe.

MARK YOUR CALENDAR!



Concert for the Hill

Featuring: **Dave Mallet**

Saturday, August 19, 2023

6–7:30pm

Beech Hill Preserve, Rockport

This is a special Arts on the Hill event to benefit our new **Beech Hill Fields and Habitat Initiative!** Attendees are invited to consider donating to sustain the Hill's historic landscape — a magical place, home to community events (like this concert!), wildlife habitats, organic blueberries, and one-of-a-kind scenic views of the coastal mountains and Penobscot Bay. Like all the concerts in this series, this event will be free and open to the public, but we hope to collect as many donations as we can at the event to support the Hill.

If you're interested in learning more about our Beech Hill management plans or making a gift ahead of the event, please contact Tempe at tempe@coastalmountains.org or visit our website at www.coastalmountains.org/BHinitiative. Thank you for your partnership and support!



Elementary school students participating in a “Pollinator Party” scavenger hunt

LEARNING LANDSCAPES BRANCHES OUT-DOORS

Land Trust guides ecology lessons at Camden-Rockport Elementary School

Last summer, Teresa Curtis, Camden-Rockport’s (CRES) kindergarten team leader, reached out to the Land Trust after hearing about our Learning Landscapes program. She and the kindergarten teaching team, which includes Kim Wickenden and Dancia Malavé, were enthusiastic about our mentorship program and incorporating outdoor learning into their school year. The team knew exactly what would be most helpful to them: watching us lead seasonally based ecology activities in *their* outdoor setting, so they could learn through modeling and easily replicate them in future. We had a blast getting to know the kindergarten students and diving into experiential lessons that featured habitats, predator/prey relationships, migration, seed dispersal, and animal tracking. The teachers were exceptionally receptive and Knox-Lincoln Soil and Water District’s Outreach Coordinator, Louisa Crane, joined in the fun!



Learning Landscapes, which seeks to connect each child in our communities with a natural place near their school and the opportunity to learn outdoors, continues to develop through these growing relationships with teachers, classroom aides, and administrators. As an example, Katie Bauer, CRES’ Assistant Principal who has a 37-year career in education and a deep

reservoir of experience in outdoor experiential education, recently joined our Learning Landscapes committee. Our robust and experienced committee includes teachers, administrators, and community members, all providing direction and vision as we grow this new program.

Looking ahead, **Learning Landscapes will be offering our first free Outdoor Learning Retreat this August for the PreK-12 educators within our service region, at our Beech Hill Preserve.** This two-day professional development experience will be followed by ongoing mentorship and support for all participating teachers in the new school year.

For more information about the upcoming retreat and Learning Landscapes which *secures* land adjacent to schools, *creates* outdoor classrooms and *supports* teachers in providing quality outdoor learning, contact leht@coastalmountains.org.



101 Mount Battie Street
Camden, ME 04843
207-236-7091
www.coastalmountains.org



Anaxyrus americanus,
eastern American toad

NONPROFIT ORG
US POSTAGE
PAID
PERMIT #11
NEWCASTLE, MAINE



MEET THE SUMMER INTERNS

Sadie Woodruff

Knox County Stewardship Intern

Sadie is a rising sophomore at Wesleyan University studying environmental science and biology. Originally from Camden, she loves spending time with her dogs on the trail and getting out on Megunticook Lake to swim and paddle board.

Isaac Widmer

Pendleton Stewardship Intern

Isaac will be a first-year at Montana State University this fall and plans to study economics. Isaac is from Montville, and enjoys skiing, mountain biking, and fishing.

Serving the communities of
Rockport, Camden, Hope, Lincolnville, Northport,
Belfast, Belmont, Morrill, Waldo, Swanville, Brooks,
Knox, Searsport, Stockton Springs, and Prospect

BOARD OF DIRECTORS

- E. Daniel Johnson**, *President*
- Gianne P. Conard**, *Vice President*
- H. Landis Gabel**, *Treasurer*
- Roger Rittmaster**, *Secretary*

Roy J. Call, Harper Coburn, Jeff Davis,
Kitty Jones, Robert S. Lawrence, Emily McDevitt,
David Noble, Maiara Rebordao, David Thanhauser,
Judy Wallingford, Elisabeth Wolfe

STAFF

- Ian Stewart**, *Executive Director*
- Maeve Cosgrove**, *Maine Conservation Corps Environmental Steward*
- Ryan Gates**, *Stewardship Program Director*
- Polly Jones**, *Finance & Operations Manager*
- Tempe Landi**, *Development & Communications Manager*
- Ryan O'Neill**, *Stewardship Project Manager*
- Heather Rogers**, *Land Protection Program Director*
- Jack Shaida**, *Stewardship & Land Protection Manager*
- Leah Trommer**, *Learning Landscapes & Outreach Manager*
- Isaac Widmer**, *Pendleton Stewardship Intern*
- Sadie Woodruff**, *Knox County Stewardship Intern*



LANDSCAPES